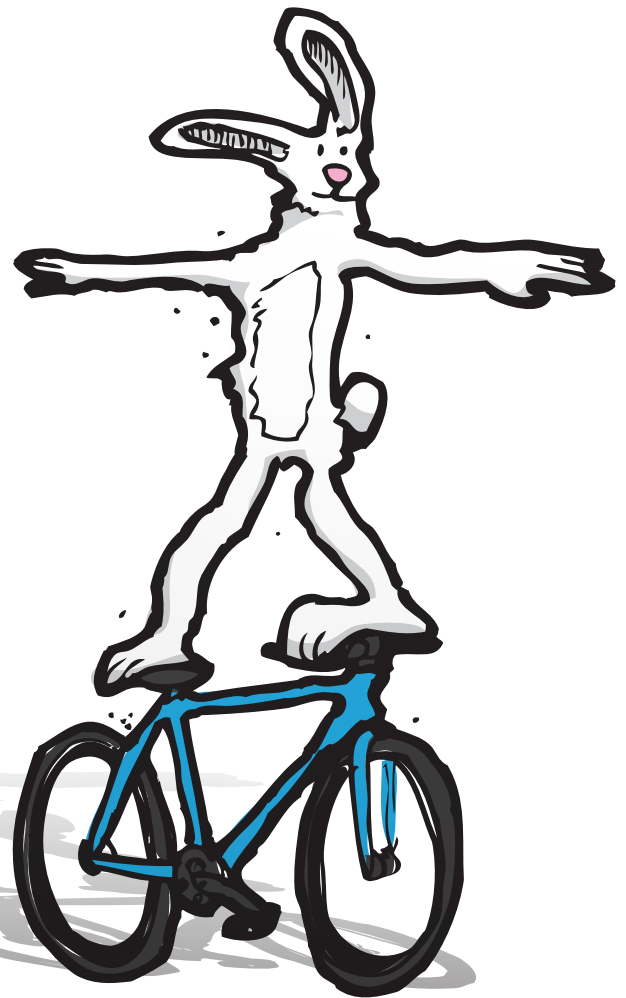
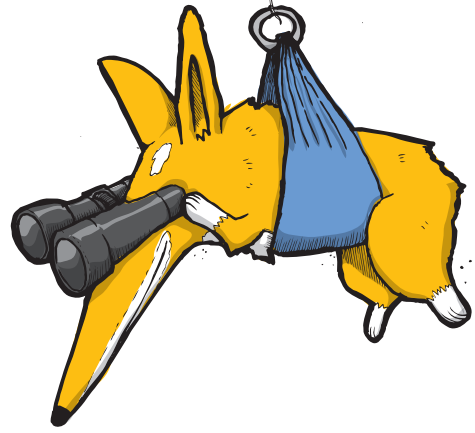




2014 BIKES

From far above Monty saw his friends having fun on their bikes. They looked so happy he decided he should get a bike... but what kind?





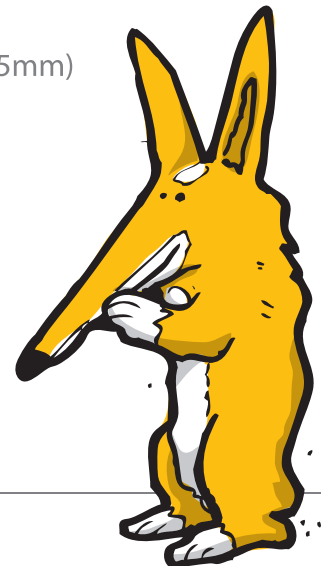


Weekender Canti

Giraffe suggested the Weekender Canti. “It has a comfortable riding position and 9 gears that are easy to use from just one shifter. Plus, the frame and fork are 100% chromoly which is tough and light.” Giraffe smiled at Monty and went on, “the Continental tires have flat protection and the wheels have allen key skewers to keep them in place. Cyclocross style canti-brakes will stop it in a hurry and give the bike a classic look. The sealed integrated headset is a great touch too.”



FRAME	S, M, L, or XL. 100% Chromoly. Disc and canti brake mounts. Rack/Fender mounts
FORK	100% Chromoly. One-piece machined steerer tube with built-in headset race
HANDLEBAR	Fairdale Archer 2, aluminum
STEM	80mm, forged aluminum
HEADSET	Sealed/Integrated, Campagnolo spec
BRAKE LEVER	L/R aluminum brake lever
BRAKE	Cyclocross-style, cantilever
GRIPS	Odyssey Terry Adams
SEAT	Fairdale
SEAT POST	Kalloy, 27.2
SEAT CLAMP	Fairdale 30mm
CRANKS	Fairdale, 42T (S: 165mm, M: 170mm, L and XL: 175mm)
PEDALS	Odyssey Twisted PC
RIMS	700c, 32-Hole, 30mm cross-section
FRONT HUB	Sealed, 32-Hole, w/allen key skewers
REAR HUB	Sealed, 32-Hole, w/allen key skewers
TIRES	Continental Contact, 700x 37mm
CHAIN	KMC X9
CASSETTE	SRAM, 11-34t
R. SHIFT LEVER	Shimano Alivio
R. DERAILLEUR	Shimano Alivio, 9-Speed
SHIFT CABLES	Fairdale



Available in Mint or Black. MSRP: \$849.99

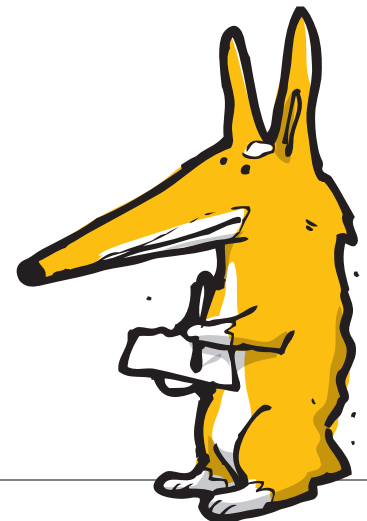


Weekender Drop / Disc

“Look closely at the Weekender Drop / Disc bike,” said the Giraffe with an all knowing smile. “Shimano Sora 2x9 shifting provides a full range of gears and Shimano Sora cranks are a great way to get the bike moving. Avid BB7 disc brakes will stop the bike and 37mm wide Continental Contact tires are stable and flat resistant. Shallow drop bars and a Fairdale seat keep it comfortable. A full selection of rack and fender mounts (including fork leg rack mounts) make this bike perfect to ride to work on, or take on a weekend tour.”



FRAME	S, M, L, or XL. 100% Chromoly. Disc brake mounts. Rack/Fender mounts
FORK	100% Chromoly. One-piece machined steerer tube with built-in headset race
HANDLEBAR	Fairdale shallow drop bar (S: 400mm, M and L: 420mm, XL: 440mm)
STEM	S and M: 80mm, L and XL: 100mm, forged aluminum
HEADSET	Sealed/Integrated, Campagnolo spec
BRAKE LEVER	Shimano Sora
BRAKE	Avid BB7 Road
GRIPS	Handlebar tape, cork
SEAT	Fairdale
SEAT POST	Kalloy, 27.2
SEAT CLAMP	Fairdale, 30mm
CRANKS	Shimano Sora, 50/34T (S: 165mm, M: 170mm, L and XL: 175mm)
PEDALS	Odyssey Twisted PC
RIMS	700c, 32-Hole, 30mm cross-section
FRONT HUB	Sealed, 32-Hole, w/allen key skewers
REAR HUB	Sealed, 32-Hole, w/allen key skewers
TIRES	Continental Contact, 700 x 37mm
CHAIN	KMC X9
CASSETTE	SRAM, 11-32t
R. SHIFT LEVER	Shimano Sora
F. SHIFT LEVER	Shimano Sora
R. DERAILLEUR	Shimano Sora, 9-Speed
F. DERAILLEUR	Shimano Sora
SHIFT CABLES	Fairdale



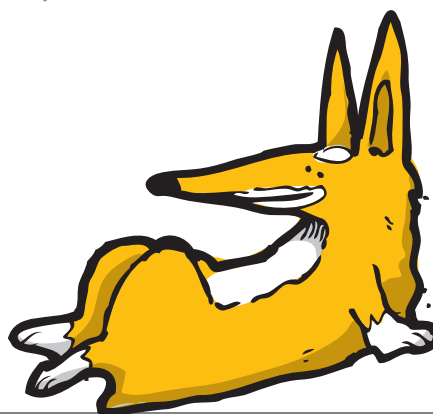


Flyer Single-Speed

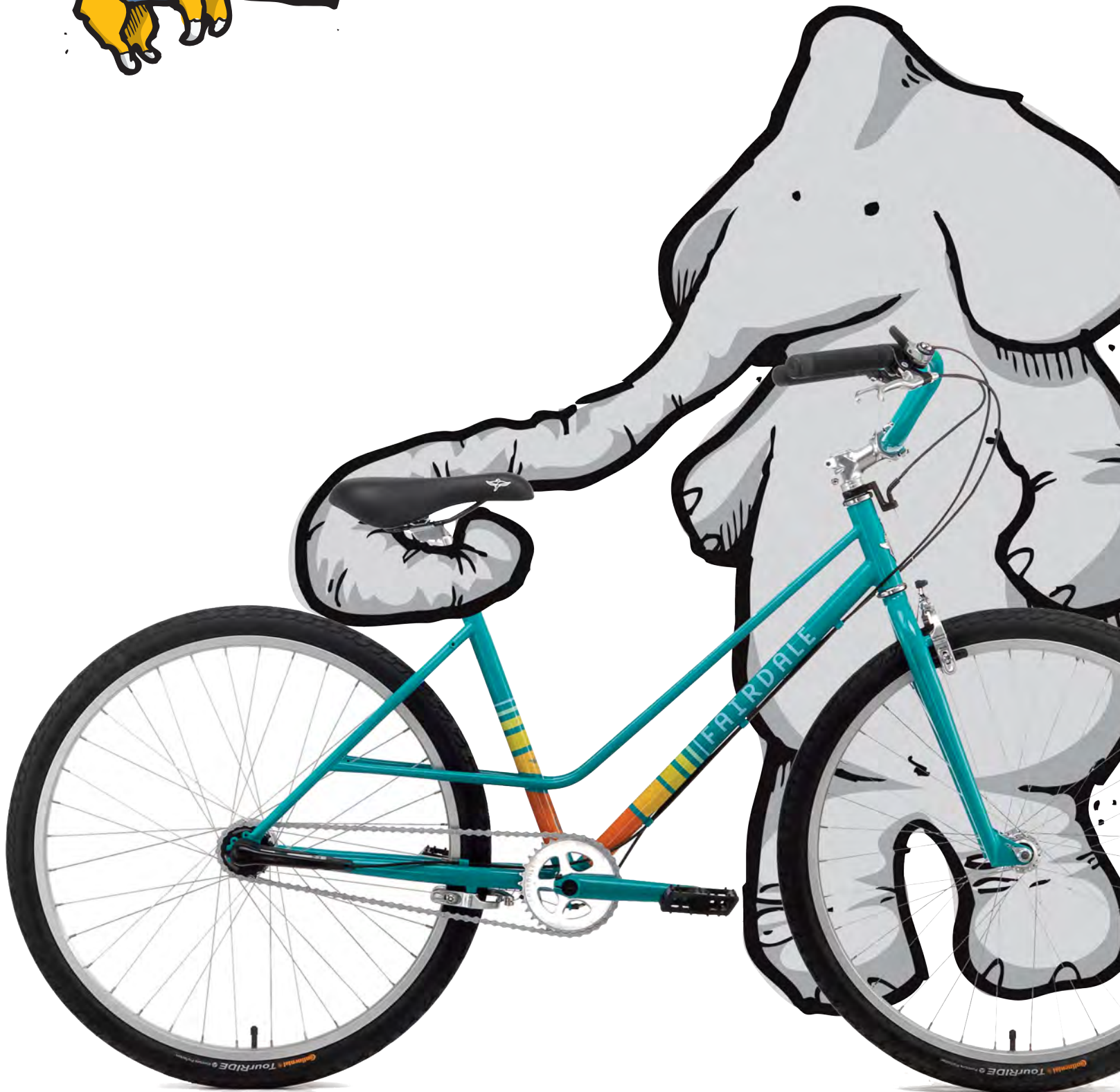
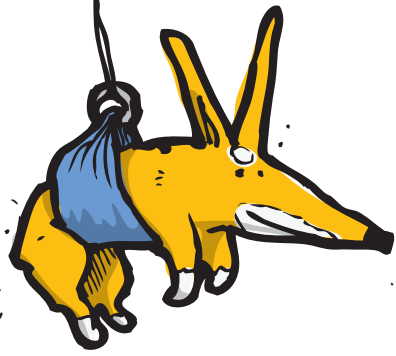
Shark popped up smiling to talk about his bike. “I suggest the Flyer Single-Speed. It’s available in a step-through or a standard frame. It’s a simple bike so there’s nothing to complicate the joy of a nice bike ride. Quality Continental tires, comfy Fairdale seat and Odyssey brakes are some of this bike’s great parts. Just hop on and go... no need to over think this.”



FRAME	Hi-Ten, low step-through frame or twin top tube frame with Rack/Fender mounts
FORK	Hi-Ten, with Fender mounts and U-Brake bosses
HANDLEBAR	Fairdale High-Rise Archer, aluminum
STEM	70mm, forged aluminum
HEADSET	1-1/8"
BRAKE LEVER	Aluminum, Left and Right
BRAKE	Odyssey Springfield, Front and Rear
GRIPS	Odyssey Terry Adams
SEAT	Fairdale
SEAT POST	Kalloy, 27.2
CRANKS	BMX-style, Three-piece, Step: Chromoly 170mm, Standard: 175mm
SEAT CLAMP	Fairdale, 30mm
SPROCKET	Fairdale, 33t
BB	Mid, 19mm, Press-fit, Sealed
PEDALS	Odyssey Twisted PC
RIMS	Double wall, 36-Hole, Aluminum
FRONT HUB	36-Hole
REAR HUB	36-Hole
TIRES	Continental Tour Ride, 26 x 1.75
CHAIN	KMC Rust Buster (1/8")
FREEWHEEL	Odyssey 13T



Available in White Step-through, White Standard, Army Green Step-through, and Army Green Standard. MSRP: \$459.99



Flyer 3-Speed

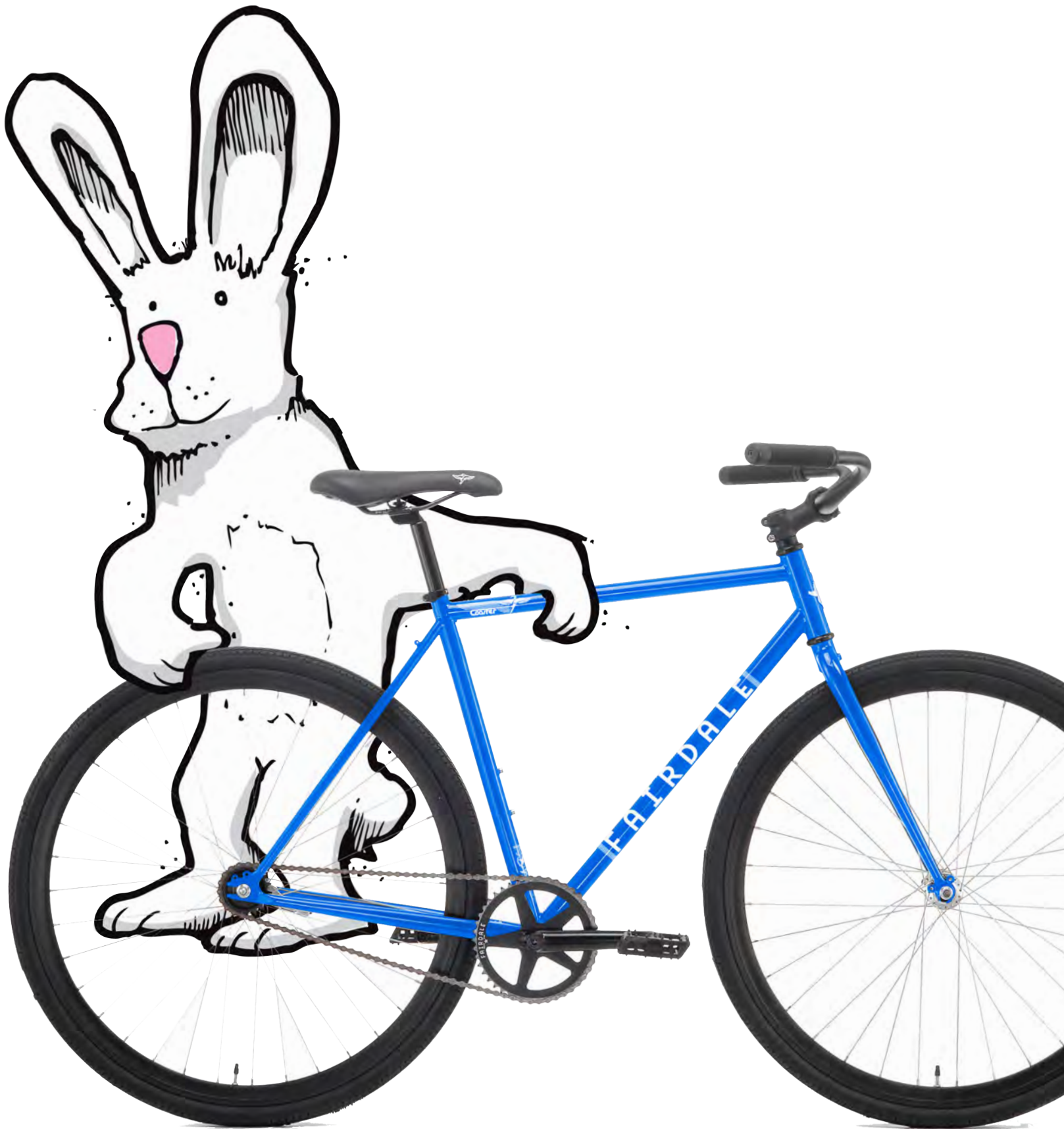
Elephant told Monty about her Flyer 3-Speed step-through. “It’s also available as a standard frame if you prefer,” she said, “A classic Sturmey Archer internal 3-speed hub will give you a nice gear range for cruising and is so easy to use. The Fairdale seat is comfortable and the sealed chromoly cranks are bullet-proof. It’s such a happy and inviting bike, I know you’ll love it!”



FRAME	Hi-Ten, low step-through frame or twin top tube frame with Rack/Fender mounts
FORK	Hi-Ten, with Fender mounts and U-brake bosses
HANDLEBAR	Fairdale High-Rise Archer, aluminum
STEM	70mm, forged aluminum
HEADSET	1-1/8"
BRAKE LEVER	Aluminum, Left and Right
BRAKE	Odyssey Springfield, Front and Rear
GRIPS	Odyssey Terry Adams
SEAT	Fairdale
SEAT POST	Kalloy, 27.2
SEAT CLAMP	Fairdale, 30mm
CRANKS	BMX-style, Three-piece, Step: Chromoly 170mm, Standard: 175mm
SPROCKET	Fairdale, 36T
BB	Mid, 19mm, Press-fit, Sealed
PEDALS	Odyssey Twisted PC
RIMS	Double wall, 36-Hole, Aluminum
FRONT HUB	36-Hole
REAR HUB	Sturmey Archer S-RF3, 36-Hole
TIRES	Continental Tour Ride, 26 x 1.75
CHAIN	KMC Rust Buster (1/8")
COG	16T Cog
SHIFTER	Sturmey Archer Thumb Shifter SLS30-T

Available in Teal Step-through, or Black Standard

MSRP: \$549.99



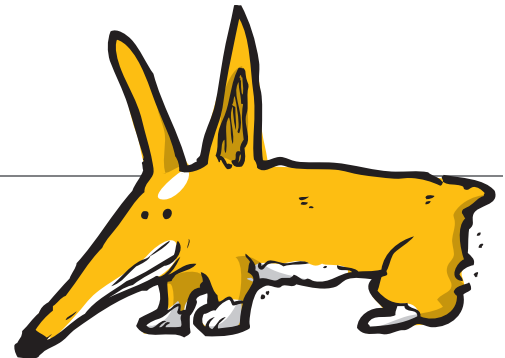
Coaster

Rabbit loves his Coaster and couldn't wait to tell Monty about it. "You'll smile if you ride this bike. With the Shimano coaster brake it is a joy to ride. The Fairdale seat and Archer bars somehow add up to make this bike magic. Classic and uncluttered cycling on this bike is a delight!"



FRAME	S, M, L, or XL. Hi-Ten frame with Rack/Fender mounts
FORK	Hi-Ten fork with Rack/Fender mounts
HANDLEBAR	Fairdale Archer 2, aluminum
STEM	70mm, forged aluminum
HEADSET	1-1/8"
GRIPS	Odyssey Terry Adams
SEAT	Fairdale
SEAT POST	Kalloy, 27.2
SEAT CLAMP	Fairdale, 30mm
CRANKS	BMX-style, Three-piece, Chromoly (S and M: 170mm, L and XL: 175mm)
SPROCKET	Fairdale, 44T
BB	Mid, 19mm, Press-fit, Sealed
PEDALS	Odyssey Twisted PC
RIMS	700c, 32-Hole(F), 36-Hole(R), 30mm cross-section
FRONT HUB	32-Hole
REAR HUB	Shimano Coaster Brake, 36-Hole
TIRES	CST 700 x 38c
CHAIN	KMC (1/8")
COG	18T

Available in Military Blue or Black MSRP: \$449.99



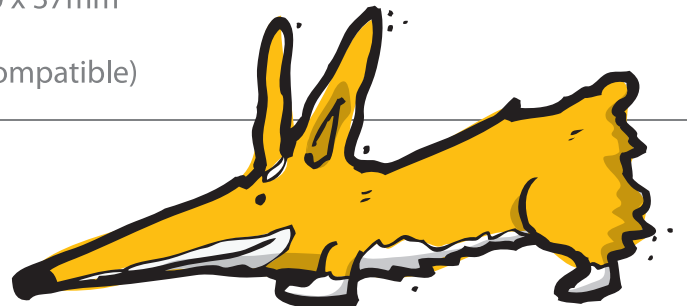


Parser

Cat stood by the Parser and bragged about it, “All butted chromoly frame, integrated headset, Continental tires, Fairdale cranks with a sealed outboard bottom bracket, and TWO cogs on the sealed rear cassette hub. That way you can easily set the bike up for whatever terrain you might come across. Cyclocross style canti-brakes and rack / fender mounts make this a great all around bike.”

FRAME	S, M, L, or XL. 100% Chromoly. Canti brake mounts. Rack/Fender mounts
FORK	100% Chromoly. One-piece machined steerer tube with built-in headset race
HANDLEBAR	Fairdale shallow drop bar (S: 400mm, M and L: 420mm, XL: 440mm)
STEM	S and M: 80mm, L and XL: 100mm, forged aluminum
HEADSET	Sealed/Integrated, Campagnolo spec
BRAKE LEVER	Fairdale single-speed drop lever
BRAKE	Cyclocross-style, cantilever
GRIPS	Handlebar tape, cork
SEAT	Fairdale
SEAT POST	Kalloy, 27.2
SEAT CLAMP	Fairdale, 30mm
CRANKS	Fairdale, 42T, w/sealed outboard BB (S: 165mm, M: 170mm, L and XL: 175mm)
PEDALS	Odyssey Twisted PC
RIMS	700c, 32-Hole, 30mm cross-section
FRONT HUB	Sealed, 32-Hole
REAR HUB	Sealed, 32-Hole, with 14T and 16T cassette cogs
TIRES	Continental Contact, 700 x 37mm
CHAIN	KMC (1/8")
COG	14T and 16T (Shimano compatible)

Available in Black only. MSRP: \$749.99



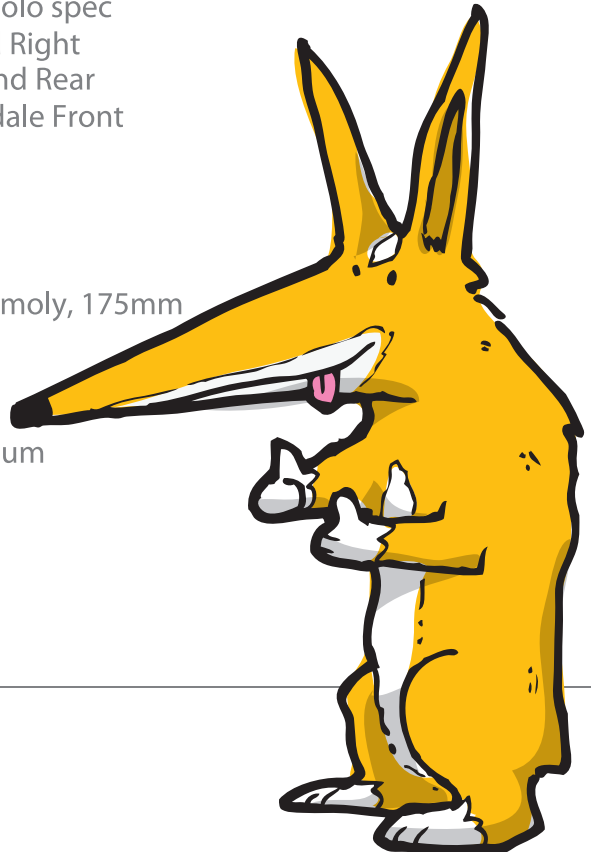


Taj

When Monty saw the Taj signature model he knew he'd found the bike for him. It's all chromoly frame, fork and handlebar were built to last. The Taj's curb-hopping and wheelie-popping geometry was great for cruising and having fun. The Odyssey parts, Maxxis 26" tires and the sealed chromoly crankset made this one quality package.

FRAME	100% Track Certified Chromoly
FORK	100% Chromoly. One-piece machined steerer tube with built-in headset race
HANDLEBAR	100% Chromoly, Two-piece, BMX-style
STEM	Sunday Freeze, top-load, BMX, aluminum
HEADSET	Sealed/Integrated, Campagnolo spec
BRAKE LEVER	Odyssey Monolever, Left and Right
BRAKE	Odyssey Springfield, Front and Rear
BRAKE CABLE	Odyssey Quik Slic REAR, Fairdale Front
GRIPS	Odyssey Terry Adams
SEAT	Odyssey Principal Pivotal
SEAT POST	Pivotal, 27.2
SEAT CLAMP	Fairdale, 30mm
CRANKS	BMX-style, Three-piece, Chromoly, 175mm
SPROCKET	Fairdale, 33t
BB	Mid, 19mm, Press-fit, Sealed
PEDALS	Odyssey Twisted PC
RIMS	Double wall, 36-Hole, aluminum
FRONT HUB	36-Hole
REAR HUB	36-Hole
TIRES	Maxxis Holy Roller, 26 x 2.2
CHAIN	KMC (1/8")
FREEWHEEL	Odyssey 13T Freewheel

Available in Black only. MSRP: \$599.99





Weekender Canti

	Small	Medium	Large	Extra Large
TOP TUBE LENGTH (actual)	507mm	528mm	554mm	575mm
TOP TUBE LENGTH (horizontal)	525mm	550mm	578mm	600mm
SEAT TUBE (BB center to top)	436mm	475mm	494mm	514mm
SEAT TUBE (BB center to TT center)	370mm	421mm	440mm	460mm
SEAT TUBE ANGLE	74°	73°	73°	73°
HEAD TUBE HEIGHT	125mm	145mm	165mm	188mm
HEAD TUBE ANGLE	70°	71°	72.5°	73°
CHAIN STAYS LENGTH	440mm	440mm	440mm	440mm
DROPOUT SPACING	135mm	135mm	135mm	135mm
BB DROP	68mm	68mm	68mm	68mm
BB TYPE	68mm Euro	68mm Euro	68mm Euro	68mm Euro
SEAT POST	use 27.2mm	use 27.2mm	use 27.2mm	use 27.2mm
SEAT CLAMP	use 30mm	use 30mm	use 30mm	use 30mm



Weekender Drop / Disc

	Small	Medium	Large	Extra Large
TOP TUBE LENGTH (actual)	507mm	528mm	554mm	575mm
TOP TUBE LENGTH (horizontal)	525mm	550mm	578mm	600mm
SEAT TUBE (BB center to top)	436mm	475mm	494mm	514mm
SEAT TUBE (BB center to TT center)	370mm	421mm	440mm	460mm
SEAT TUBE ANGLE	74°	73°	73°	73°
HEAD TUBE HEIGHT	125mm	145mm	165mm	188mm
HEAD TUBE ANGLE	70°	71°	72.5°	73°
CHAIN STAYS LENGTH	440mm	440mm	440mm	440mm
DROPOUT SPACING	135mm	135mm	135mm	135mm
BB DROP	68mm	68mm	68mm	68mm
BB TYPE	68mm Euro	68mm Euro	68mm Euro	68mm Euro
SEAT POST	use 27.2mm	use 27.2mm	use 27.2mm	use 27.2mm
SEAT CLAMP	use 30mm	use 30mm	use 30mm	use 30mm



Flyer 3-Speed and Single-Speed

	Step-thru	Standard
TOP TUBE LENGTH (horizontal)	575mm	600mm
SEAT TUBE (BB center to top)	420mm	475mm
SEAT TUBE (BB center to TT center)	375mm	435mm
SEAT TUBE ANGLE	70°	70°
HEAD TUBE HEIGHT	120mm	120mm
HEAD TUBE ANGLE	70°	70°
CHAIN STAYS LENGTH	438mm	438mm
DROPOUT SPACING	120mm	120mm
BB DROP	40mm	40mm
BB TYPE	Mid Press Fit	Mid Press Fit
SEAT POST	use 27.2mm	use 27.2mm
SEAT CLAMP	use 30mm	use 30mm



Coaster

	Small	Medium	Large	Extra Large
TOP TUBE LENGTH (actual)	495mm	516mm	546mm	569mm
TOP TUBE LENGTH (horizontal)	510mm	530mm	560mm	580mm
SEAT TUBE (BB center to top)	480mm	520mm	550mm	580mm
SEAT TUBE (BB center to TT center)	446mm	487mm	517mm	548mm
SEAT TUBE ANGLE	74.5°	74°	73°	73°
HEAD TUBE HEIGHT	108mm	120mm	145mm	160mm
HEAD TUBE ANGLE	70°	71°	72°	73°
CHAIN STAYS LENGTH	424mm	424mm	424mm	424mm
DROPOUT SPACING	120mm	120mm	120mm	120mm
BB DROP	68mm	68mm	68mm	68mm
BB TYPE	Mid Press Fit	Mid Press Fit	Mid Press Fit	Mid Press Fit
SEAT POST	use 27.2mm	use 27.2mm	use 27.2mm	use 27.2mm
SEAT CLAMP	use 30mm	use 30mm	use 30mm	use 30mm



Parser

	Small	Medium	Large	Extra Large
TOP TUBE LENGTH (actual)	497mm	521mm	551mm	574mm
TOP TUBE LENGTH (horizontal)	510mm	530mm	560mm	580mm
SEAT TUBE (BB center to top)	480mm	520mm	550mm	580mm
SEAT TUBE (BB center to TT center)	446mm	487mm	517mm	548mm
SEAT TUBE ANGLE	74.5°	74°	73°	73°
HEAD TUBE HEIGHT	108mm	120mm	145mm	160mm
HEAD TUBE ANGLE	70°	71°	72°	73°
CHAIN STAYS LENGTH	424mm	424mm	424mm	424mm
DROPOUT SPACING	120mm	120mm	120mm	120mm
BB DROP	68mm	68mm	68mm	68mm
BB TYPE	68mm Euro	68mm Euro	68mm Euro	68mm Euro
SEAT POST	use 27.2mm	use 27.2mm	use 27.2mm	use 27.2mm
SEAT CLAMP	use 30mm	use 30mm	use 30mm	use 30mm



Taj

TOP TUBE LENGTH (actual)	575mm
TOP TUBE LENGTH (horizontal)	600mm
SEAT TUBE (BB center to top)	440mm
SEAT TUBE (BB center to TT center)	414mm
SEAT TUBE ANGLE	71°
HEAD TUBE HEIGHT	117.5mm
HEAD TUBE ANGLE	71°
CHAIN STAYS LENGTH	417mm
DROPOUT SPACING	110mm
BB DROP	40mm
BB TYPE	Mid Press Fit
SEAT POST	use 27.2mm
SEAT CLAMP	use 30mm





www.Fairdalebikes.com
info@Fairdalebikes.com

Fairdale is available in the USA from
Full Factory Distribution
(512) 382-9973
www.FullFactoryDistro.com